

SPECIAL DISTRICT PUBLIC DISCLOSURE  
AND MAP OF BOUNDARIES  
PURSUANT TO SECTION 32-1-104.8, C.R.S.

THE SHORES ON PLUM CREEK METROPOLITAN DISTRICT NOS. 1-10 (collectively, the “District”) Weld County, Colorado

The Powers of the District as authorized by Section 32-1-1004, C.R.S. and the District’s Service Plan or, as appropriate, the District’s Statement of Purpose as described in Section 32-1-208, C.R.S, current as of the time of the filing:

For and on behalf of the special district, the Board of Directors is authorized certain powers under Section 32-1-1001, C.R.S. and additional powers by Section 32-1-1004, C.R.S. Subject to the limitations in the District’s Service Plan, or, as appropriate, the District’s Statement of Purpose as described in Section 32-1-208, C.R.S, the District has all powers and authorities granted to special districts under the Special District Act, and other applicable statutes, common law and the State Constitution, which may be exercised to provide for the acquisition, construction, completion, operation and maintenance of District services and improvements.

The District’s Service Plan or, as appropriate, the District’s Statement of Purpose as described in Section 32-1-208, C.R.S., can be amended from time to time and includes a description of the District’s powers and authority. A copy of the Service Plan or Statement of Purpose is available from the Division of Local Government in the State Department of Local Affairs.

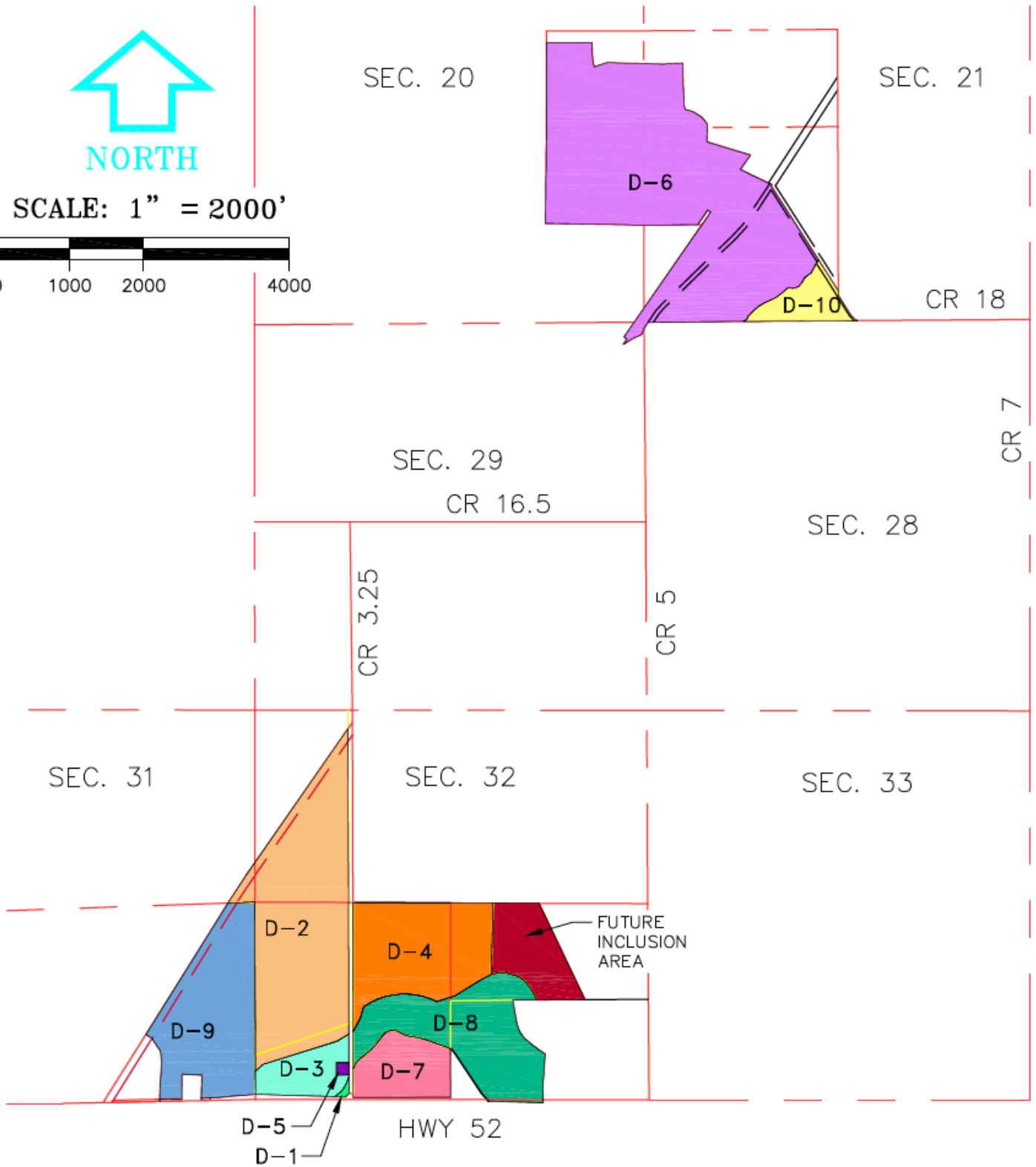
The District is authorized by Title 32 of the Colorado Revised Statutes to use a number of methods to raise revenues for capital needs and general operations costs. These methods, subject to the limitations imposed by Section 20 of Article X of the Colorado Constitution, include issuing debt, levying taxes, and imposing fees and charges. Information concerning directors, management, meetings, elections, and current taxes are provided annually in the Notice to Electors described in Section 32-1-809(1), Colorado Revised Statutes, which can be found at the District office, on the District’s website, on file at the Division of Local Government in the State Department of Local Affairs, or on file at the office of the Clerk and Recorder of each County in which the special district is located.

A map showing the District’s boundaries is attached to this Notice.

# EXHIBIT



SCALE: 1" = 2000'

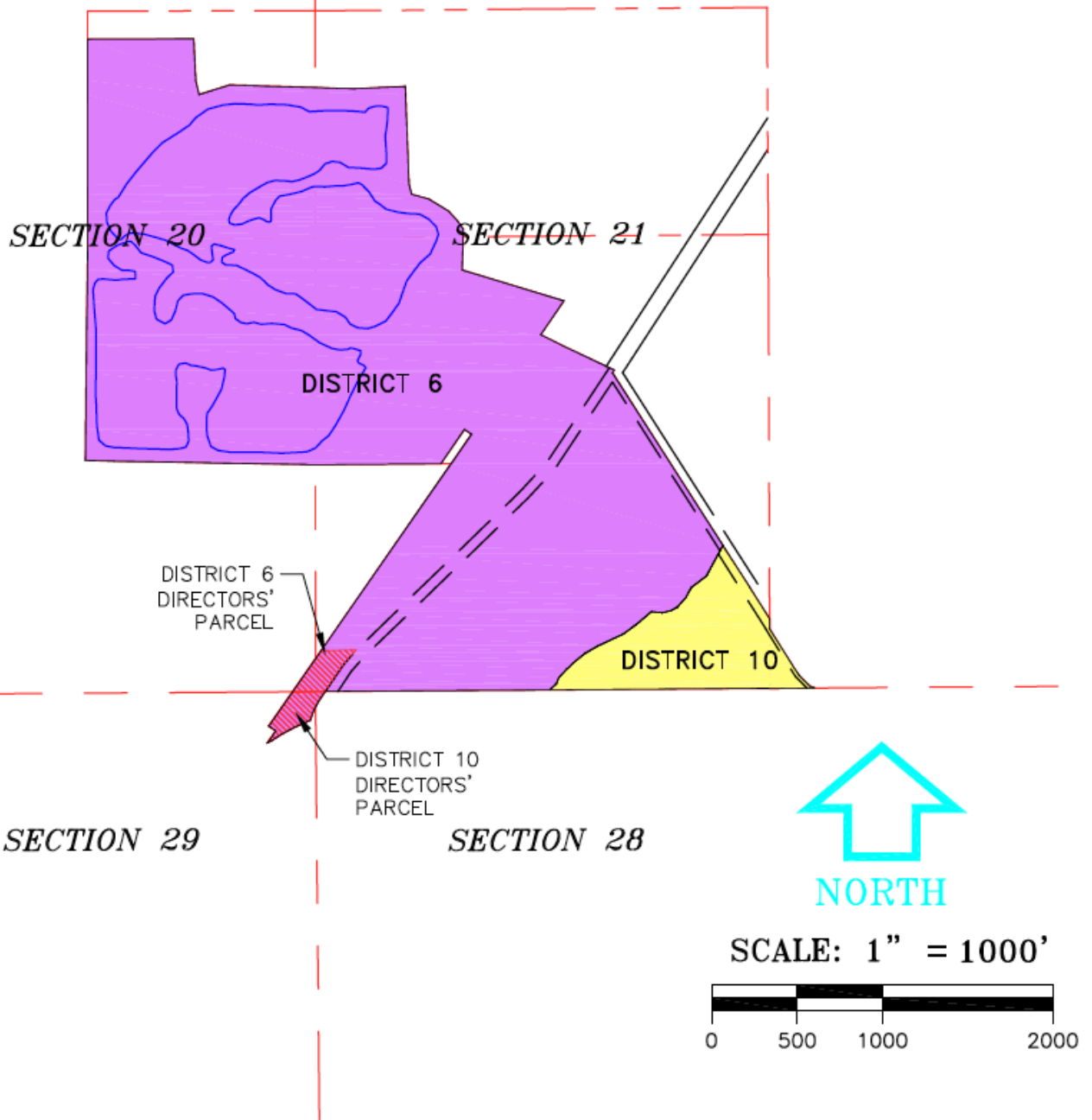


P.O. Box 930 • Erie, Colorado 80516  
(303) 828-3340 • www.coloradols.com

THE SHORES ON PLUM CREEK  
DISTRICT BOUNDARY MAP  
WITH DIRECTOR PARCELS  
FREDERICK, WELD COUNTY, COLORADO

DATE: 10/08/18	SCALE 1"=100'	JOB NO.: S175132	DRAWN: JDA	CHECKED: JPE
-------------------	------------------	---------------------	---------------	-----------------

# EXHIBIT



  
**EHRHART**  
LAND SURVEYING

P.O. Box 930 • Erie, Colorado 80516  
(303) 828-3340 • [www.coloradols.com](http://www.coloradols.com)

THE SHORES ON PLUM CREEK  
DISTRICT BOUNDARY MAP  
WITH DIRECTOR PARCELS  
FREDERICK, WELD COUNTY, COLORADO

DATE:  
10/8/18

SCALE  
1"=1000'

JOB NO.:  
S175132

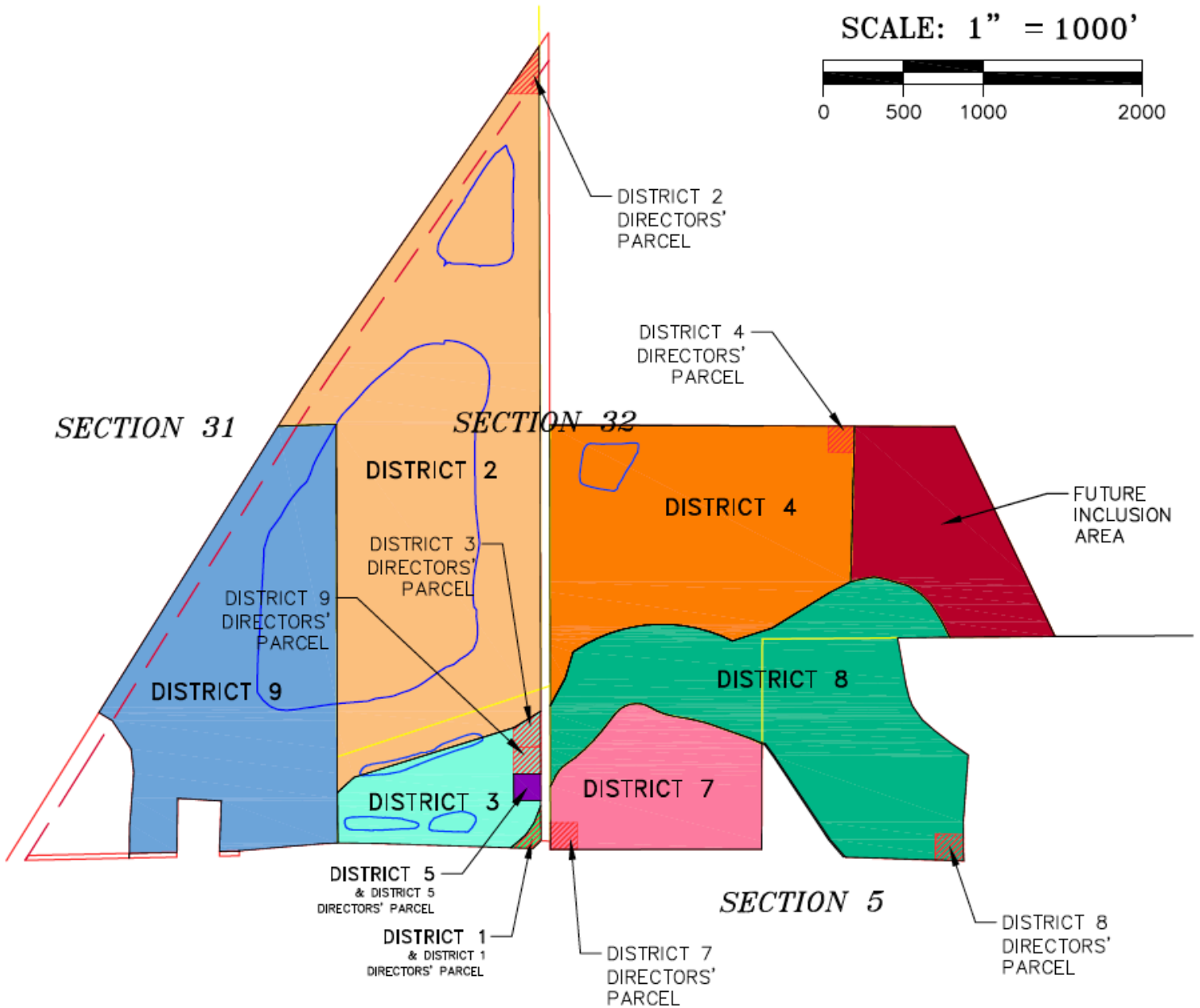
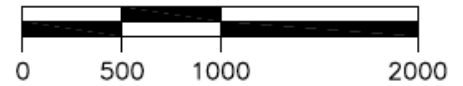
DRAWN:  
JDA

CHECKED:  
JPE

# EXHIBIT



SCALE: 1" = 1000'



P.O. Box 930 • Erie, Colorado 80516  
(303) 828-3340 • www.coloradols.com

THE SHORES ON PLUM CREEK  
DISTRICT BOUNDARY MAP  
WITH DIRECTOR PARCELS  
FREDERICK, WELD COUNTY, COLORADO

DATE: 10/8/18	SCALE 1"=1000'	JOB NO.: S175132	DRAWN: JDA	CHECKED: JPE
------------------	-------------------	---------------------	---------------	-----------------